

The Duxbury Education Foundation

2007 Annual Report

Helping Duxbury
Students and Teachers
Reach Higher



The Duxbury Education Foundation
www.duxburyeducationfoundation.org

*The DEF is a 501(c) (3) organization supported by
fundraising activities and tax-deductible donations*



The Duxbury Education Foundation

P.O. Box 1264
Duxbury, MA 02331-1264

Duxbury Education Foundation

MISSION

The mission of the Duxbury Education Foundation is to provide grants that will enrich and encourage innovative educational programs for students in the town of Duxbury.

The DEF is a private, not-for-profit organization founded in 1989 after proposition 2 ½ budget cutbacks forced the Duxbury school system to cancel many fine arts and enrichment programs.

The DEF is managed by a board of 15-17 volunteers, who meet regularly to organize fundraising activities and consider grant applications. Any teacher or administrator in the Duxbury schools, or anyone with a program designed to enrich the educational experience of Duxbury students, may apply in writing for a grant.

For more information about the DEF, including the grant application process, please visit our website:
www.duxburyeducationfoundation.org.

DEF Fundraisers

DIVOTS FOR DUXBURY

A unique golf tournament, with both a scramble and a two-person, best ball competition. Participating golfers are asked to gather sponsors, and individual and corporate sponsorships are also offered.

ANNUAL APPEAL

Each year we contact every household in Duxbury, highlighting the past year's accomplishments and asking residents to continue their generous support of our schools and children.

GIFTS FOR LEARNING

Donations are made on behalf of a teacher, administrator or significant person in a child's life.

SPELLING BEE

A community event, the annual Spelling Bee attracts spellers and sponsors of all ages to compete in a friendly and challenging competition. Teams are divided into 'hives' that spell against one another before a crowd of cheering spectators.

DINNERS FOR DUXBURY

This is a traditional DEF fundraiser in which sponsors invite guests to their homes for dinner. Attending guests are asked to make a financial contribution.

5K ROAD RACE AND KIDS' FUN RUN

A five kilometer road race, together with a separate fun run for younger children, held at the Chandler School and surrounding community. A perfect beginning to the Memorial Day weekend festivities in Duxbury.

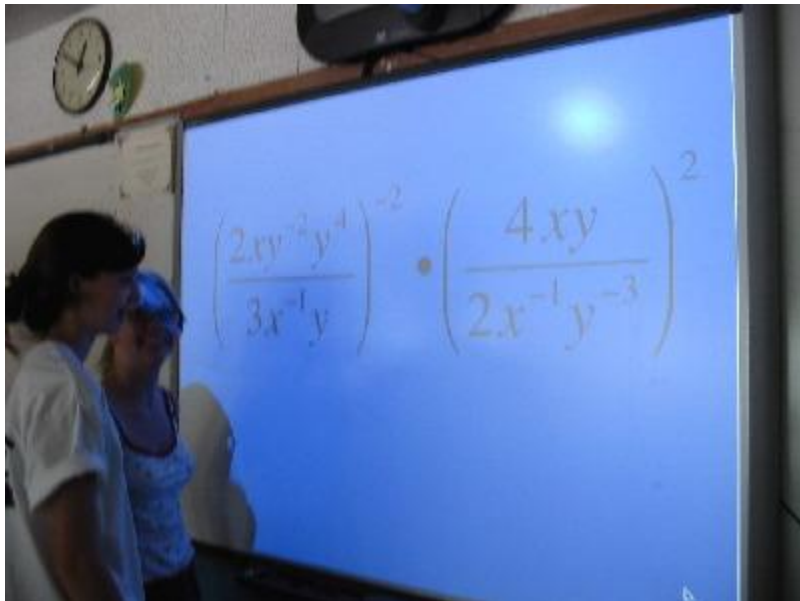
DEF Grants Awarded in 2007

More than \$65,000 awarded this year

TI-83Plus Graphing Calculators - Funding was also provided to the Duxbury Middle School for one classroom set of TI-83Plus graphing calculators for 8th grade algebra students.

Digital Design Fabrication Equipment - The DEF funded the purchase of digital design fabrication equipment to enable Duxbury High School Technology and Engineering students to create physical models of objects they have designed.

SMARTBoard Interactive Whiteboard - Following the successful implementation of DEF-funded SMARTBoard Interactive Whiteboards for the Duxbury Middle School, the DEF funded an additional SmartBoard for 9-10th grade math students and for students participating in the after-school MCAS program.



Digital Studio Art Equipment - The DEF funded the purchase of equipment for the Duxbury High School Art Department. This grant included funding to purchase a 3 light complete studio kit, digital camera and infocus projector. This equipment will benefit students submitting digital artwork for AP portfolios and college applications.



"Time Timer" Devices - At Chandler School a grant was approved to purchase "Time Timer" devices for all classrooms. This instructional tool is designed to support the teaching of time and time management, making the concept of elapsed time easier to understand for all ages and ability levels.

Innovative Digital Classroom Concept - The Duxbury Middle School (DMS) received funding for the purchase of digital equipment for an 8th grade English inclusion classroom. Equipment included a digital projector, three digital cameras, one airport base station, and five laptop computers. This technology will greatly enhance the communication abilities of all students including some with expressive and receptive language challenges. This technology brings digital storytelling, translation of text-to-speech and power-point presentation capabilities to the classroom-enhancing the learning experience.

World Culture/Geography Library Materials - The Duxbury Middle School received funding for a new collection of World Culture/Geography materials for the DMS library.

World Language and Culture Course - Funding was awarded to the Duxbury Middle School for the development of curriculum and the purchase of materials for a new World Language and Culture Course. This course offers an exploratory approach to language learning and culture and will allow students to gain experience with and insight into each of the three major languages offered in the Duxbury school system. The recent development of this course at the high school, was also funded by the DEF.

Digital Photography Lab Equipment - The DEF funded the purchase of equipment for the Duxbury High School Photography Lab. This grant included funding to purchase enlargers and projectors. This popular high school elective needed expanded and additional equipment.



The Duxbury Education Foundation

The DEF believes that great public schools are both a basic right and a community responsibility. With that spirit in mind, we would ask you to please consider making a tax-deductible donation to the DEF before year-end. Donations may be sent to:

The Duxbury Education Foundation
PO Box 1264
Duxbury, MA 02331
Phone: (781) 934-5188
www.duxburyeducationfoundation.org

Thank you for your support!

2007
Duxbury Education Foundation
Board of Trustees

Marty Desmery, President

Wayne Clough, Vice President

Mark Dow, Treasurer

Gay Shanahan, Secretary

Barbara Kosharek, Grants Co-Chair

Leslie Hochstein, Grants Co-Chair

Susie Caliendo

Laurie Gallagher

Holly Gerraughty

John Mattes

Mary K Siciliano

Lisa Tower

Melinda Campbell

Peggy Davis

Jennifer Fallon

Cattina Guimetti

Jamie Walsh

The Duxbury Education Foundation, Inc.
Statement of Financial Position
Unaudited
As of June 30, 2007

	<u>Operating Fund</u>	<u>Endowment Funds</u>	<u>Total Funds</u>
Assets			
Cash	\$ 35,362	\$ -	\$ 35,362
Investments, at Market	22,760	132,425	155,185
Total Assets	<u>\$ 58,122</u>	<u>\$ 132,425</u>	<u>\$ 190,547</u>
Liabilities			
Grants Payable	\$ 2,400	\$ -	\$ 2,400
Net Assets- Unrestricted	<u>\$ 55,722</u>	<u>\$ 132,425</u>	<u>\$ 188,147</u>
Total Liabilities and Net Assets	<u>\$ 58,122</u>	<u>\$ 132,425</u>	<u>\$ 190,547</u>

The Duxbury Education Foundation, Inc.
Statement of Activities
Unaudited
As of June 30, 2007

	<u>Operating Fund</u>	<u>Endowment Funds</u>	<u>Total Funds</u>
Changes in Unrestricted Net Assets:			
Contributions	\$ 18,851	\$ -	\$ 18,851
Fundraising Events, net	64,916	-	64,916
Investment Income	348	12,774	13,122
Total Revenue	<u>\$ 84,115</u>	<u>\$ 12,774</u>	<u>\$ 96,889</u>
Expenses:			
Grants	\$ 65,012	\$ -	\$ 65,012
Printing & Non-Program Costs	1,321	-	1,321
Total Expenses	<u>\$ 66,333</u>	<u>\$ -</u>	<u>\$ 66,333</u>
Increase in Unrestricted Net Assets	<u>\$ 17,782</u>	<u>\$ 12,774</u>	<u>\$ 30,556</u>

PRESIDENT'S MESSAGE

Since its inception eighteen years ago, the Duxbury Education Foundation ("DEF") has been adding to the community in many meaningful ways, most importantly by funding innovative educational programs.

As I look back on the past three years as a member of the board, and most recently as president, it is with a great deal of pride in the hard work and efforts of my fellow board members, as well as a real sense of accomplishment in what we have achieved. This fiscal year, through several important fundraisers including our first annual (and very successful) 5K and Fun Run, the board was able to fund more than \$60,000 in grant requests.

DEF funded programs at each of Duxbury's four schools, including programs in the arts, languages, science and math, and technology. One truly pioneering program funded this year was the purchase of digital equipment for an 8th grade English inclusion classroom, including a digital projector, three digital cameras, one airport base station, and five laptop computers. This technology will greatly enhance the communication abilities of all students - including some with expressive and receptive language challenges - by bringing digital storytelling, translation of text-to-speech and presentation capabilities to the classroom. DEF also funded the purchase of digital design fabrication equipment to enable Duxbury High School technology and engineering students to create physical models of objects they have designed.

DEF cannot be successful without the participation and generosity of residents, corporate sponsors, local businesses, families and others. This year, DEF increased efforts to raise awareness of the foundation, including the introduction of a news column in the Duxbury Clipper, and an expanded presence on the internet as we continue to enhance our website at www.duxburyeducationfoundation.org. We appreciate the continued support of the community in enabling us to raise funds to support educational programs for Duxbury's children.

Jennifer Hanes-Schromm
President, 2007

Professional "Fiddle" Instruction

This grant will provide professional fiddle instruction to all 280 string students in grades 5-12. This instruction will provide musical enrichment and experience in the "Fiddle" genre of string playing, exposing students to a different style of music. The Fiddle group "Notorious" will work with each school orchestra.



Sound Amplification System

Chandler School has already implemented six *Easy Listener/FrontRow* sound field amplification systems in use in kindergarten through grade two classrooms. This grant funded the purchase of two additional sound amplification systems for Chandler School. This project will support ongoing efforts by the Chandler School community to improve and develop the learning environment for all students, specifically as it relates to the classroom listening environment.